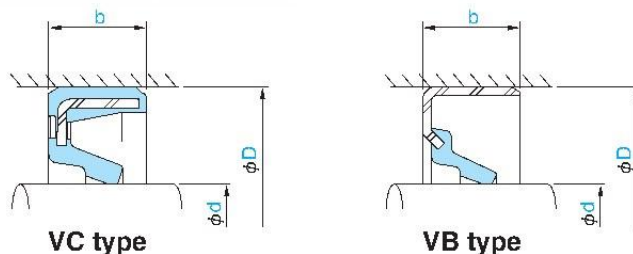
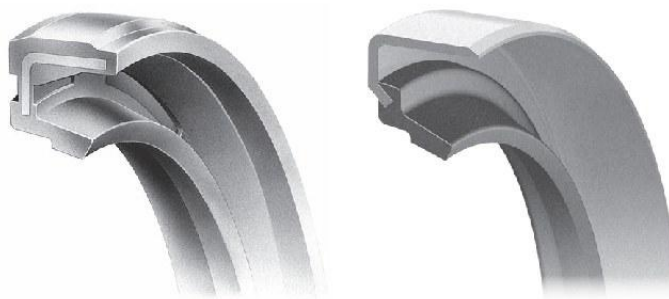


# VC Type, VB Type



- The sectional view on the right shows the typical profile of the seal type.
- Please refer to page 25 for the respective advantages and disadvantages of Types B and C.
- Check the guide to allowable operating conditions on pages 10 and 11 for relevant information on the seal selected before use.

■ When ordering, please indicate the NOK part number and the relevant dimensions.  
**Order Example** NOK Part Number: AG 1132 E0  
 Type: VC, Shaft diameter: 22, Outside diameter: 38, Width: 6

14

VC, VB type

Dimensions			Part Number	
Shaft diameter d	Outside diameter D	Width b	Nitrile (NBR)	
			VC type	VB type
22	38	6	AG 1132 E0	AF 1132 E0
22	42	5	AG 1144 A0	AF 1144 E0
22	47	7	AG 1161 E0	—
23	32	7	AG 1213 E8	—
23	42	6	AG 1222 A5	—
24	38	5	AG 1250 E0	AF 1250 E0
24	40	6	AG 1258 A0	AF 1258 G0
24	47	5	AG 1268 E0	—
25	35	5	AG 1291 E0	AF 1291 E0
25	38	5	AG 1303 E0	AF 1303 F2
25	40	5	AG 1311 A0	AF 1311 G0
25	40	6	AG 1312 A0	AF 1312 E0
25	41	6	AG 1317 E0	—
25	42	5	AG 1321 E0	—
25	45	5	AG 1333 E0	AF 1333 E0
25	45	7	AG 1334 E0	AF 1334 E0
25	47	5	AG 1347 E0	AF 1347 E0
25	47	6	AG 1348 E1	AF 1348 E0
25	50	5	AG 1359 E1	AF 1359 E0
26	40	5	AG 1466 E0	—
26	42	6	AG 1473 A0	—
26	48	6	AG 1479 E0	AF 1479 E0
27	42	7	AG 1510 E0	—
27	47	8	AG 1517 A0	AF 1517 E0
28	40	5	AG 1535 E0	AF 1535 G0
28	45	6	AG 1548 E0	AF 1548 E0
28	47	5	AG 1556 E0	AF 1556 E0
28	48	5	—	AF 1560 E0
28	48	6	AG 6759 A0	—
28	50	6	AG 1568 E0	AF 1568 F0
30	40	5	AG 1654 E0	AF 1654 E0
30	42	5	AG 1663 F0	AF 1663 E0
30	45	6	AG 1676 A0	AF 1676 E0
30	46	5	AG 1686 E0	AF 1686 E0
30	48	6	AG 1698 E0	—
30	50	5	AG 1703 A0	AF 1703 E0
30	50	8	AG 1705 E0	AF 1705 E0
30	52	5	AG 1717 E0	AF 1717 E0
30	55	5	AG 1731 E0	AF 1731 E0
30	56	5	AG 1741 E0	—
32	45	5	AG 1876 E0	AF 1876 E0
32	48	6	AG 1892 E0	—
32	52	5	AG 1899 A0	AF 1899 E0
34	54	8	AG 6760 A0	—
35	45	5	—	AF 2033 E0